



EECS

Procedures for New Equipment Installations in EECS data Centers

EECS Facilities

New Equipment Request

Please fill out this form with all relevant information

In an effort to modernize data centers in EECS we have standardized new equipment being specified. We encourage the alternative options of housing your computing needs with:

UC Berkeley's IST Cloud Computing group: <http://ist.berkeley.edu/is/platforms/cloud>

Or with EECS Iris Computing group: <https://iris.eecs.berkeley.edu/>

Equipment installed in EECS datacenters must be rack mounted. Desktops in a cabinet will be allowed for a limited period of time. Once capacity is an issue, desktops on shelves will be phased out to rack mounted equipment.

Name: _____

Date: _____ Expected Install Date: _____

Sponsor: _____ Research Group: _____

Equipment specified: _____

How many racks (1U)/cabinets will you need?: _____

COA#: _____

Fill the information below with EECS Facilities Group:

Building: Cory or Soda (circle one)

Room: _____

Location: _____

Install Estimate

This is an estimate of the typical charges involved with the install of a new cabinet in EECS.

DATASPAN

| Part # | Description | Qty | Price | Total |
|------------------|---|-----|------------|------------|
| AFSG3 | 3" FLOOR GROMMET | 2 | \$4.95 | \$9.90 |
| AMDPERF800ST61IT | PERF FLOOR TILES New 1/16th Inch | 1 | \$65.00 | \$65.00 |
| AMDCCN1250ST61IT | SOLID FLOOR TILES STARLIGHT GREY 1/16 TH INCH | 3 | \$49.00 | \$147.00 |
| AR3100 | NetShelter SX 42U 600mm Wide x 1070mm deep enclosure | 1 | \$1,199.95 | \$1,199.95 |
| AP8941 | Rack PDU switched ZeroU 30A/208V 21 c- 13 & 3 c-19 | 2 | \$875.50 | \$1,751.00 |
| AR8136BLK | 1U 19" black modular tool less airflow blanking panels qty 10 | 5 | \$39.25 | \$196.25 |
| AR8105BLK | Fixed Shelf 50 lbs black | 1 | \$53.95 | \$53.95 |
| AP8702R | Power cord kit locking 6 each C13-C14 | 6 | \$37.50 | \$225.00 |
| AR770 | NetShelter SX Bolt down kit | 1 | \$58.50 | \$58.50 |
| AR8006A | Equipment Rails | 1 | \$57.50 | \$57.50 |
| AP9335TH | APC Temperature & Humidity sensors | 1 | \$118.00 | \$118.00 |

subtotal \$3,882.05

+shipping

DEPARTMENT

| | | | | |
|------|-------------------------------|----|-----|----------|
| Misc | Electrician (hrs) | 5 | 96 | \$480.00 |
| Misc | Excess & Salvage | 1 | 250 | \$250.00 |
| Misc | Site Prep/Rack Installation | 40 | 14 | \$560.00 |
| Misc | Machine Shop –Seismic Bracing | 2 | 75 | \$150 |

subtotal \$1,440.00

TOTAL \$5,322.05

Optional

| | | | | |
|-----------|---------------------------|---|---------|--|
| AR8122BLK | Fixed Shelf 250 lbs black | 1 | \$87.80 | |
|-----------|---------------------------|---|---------|--|

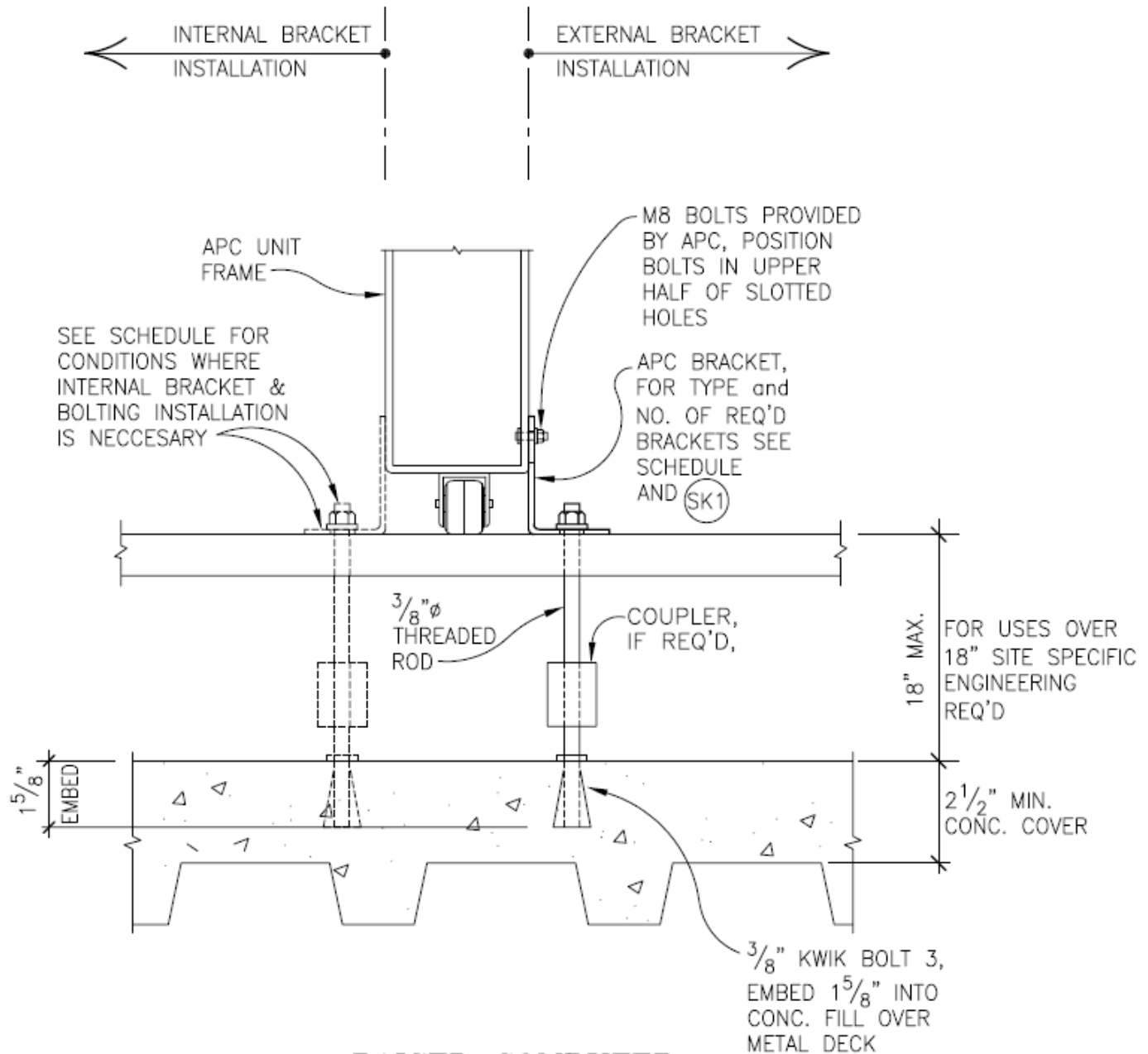
Install Schedule

This is an estimate of the typical schedule with the install of a new cabinet in EECS.

| Task Name | Duration | Resource Names |
|--|------------------|--------------------------------------|
| EECS New Cabinet Install | 31.5 days | |
| Planning | 9 days | |
| Space Planning | 2 days | |
| Coordinate with EECS regarding space planning of racks. How many cabinets/racks? What room? Etc. | 2 days | Scott,Client,Sergio |
| Ordering/Purchasing | 2 days | |
| Ordering of Cabinets/Racks. For prices see page 2. | 2 days | Client,Sergio,Jill (dataspan) |
| Electrical prep work | 5 days | |
| Measure cable lengths | 1 day? | Sergio Janet |
| Identify power needs, disconnect old power, run new power to area, | 3 days | Dave or contrac- tor,Sergio,Scott |
| Identify networking needs, port ID's | 1 day | Janet,Sergio,Aaron |
| Installation | 22.5 days | |
| Shipping | 15 days | |
| New cabinet/equipment shipped/delivery | 3 wks | Jill (dataspan) |
| Delivery | 0.5 days | |
| Delivery of Cabinets to destination by ERSO shipping and receiving | 0.5 days | Erso,Sergio |
| Installation | 4 days | |
| Assembly of cabinets. Discard pallete and packaging. | 2 days | BMW's |
| Install networking cables | 1 day | Janet,BMW's |
| Cut 3" diameter hole in floor tile. Install Grommet | 1 day | Machine Shop |
| Seismic bracing | 1 day | |
| Installation of seismic bracing. Bolting cabinet to subfloor by contractor. | 1 day | Machine Shop,Sergio |
| Electrical work | 2 days | |
| Installation of PDU's by electrician or contractor. | 2 days | Dave or contractor |

Details

Installation detail of seismic bracing.



RAISED COMPUTER FLOOR INSTALLATION

DETAIL

3" = 1'-0"

NOTE: FOR RAISED COMPUTER FLOORS OVER CONCRETE SLAB CONDITION, SEE (SK3) SIM.